



# Important Information!

[Upgrading](#)

[Authentication](#)

[Windows Help](#)

Pre-Installation Steps:

[Evaluation Installation](#)

[SQL Server Installation](#)

[Oracle Installation](#)

## Upgrading

You can only convert data from versions 3.60, 4.00 or 4.01 to this version. Older versions must first be upgraded to version 3.60, 4.00 or 4.01.

**You cannot 'upgrade' installations from versions 3.60 or 4.00 'in place'.**

You must create a new installation of version 4.10 and then you can convert the version 3.60 or 4.00 data from your existing installation to this new installation using the GECSC360 or GECSC400 conversion utilities.

**You can 'upgrade' installations from version 4.01 'in place'**

During installation you will see a selection for 'upgrading'. This is for 'in place' upgrading from version 4.01 or from an earlier build of version 4.10.

**The manual contains complete instructions on 'converting' your data to version 4.10.**

## Authentication Methods

This version of GECS can run using any of 4 different authentication methods.

There are two methods that rely only on data stored in GECS's data tables. These Authentication methods are selected in Workstation Setup as either 'Manual' or 'Use Current User'.

There are two methods which use both GECS's data and Active Directory (LDAP) data for authentication. These Authentication methods are selected in Workstation Setup as either 'Use AD Auto' or 'Use AD Alias.'

During the initial installation, you should only select one of the first 2 methods. If you wish to use either of the methods that rely on Active Directory, you will need to setup some GECS data using one of the first two methods and then switch to one of the AD based methods. See the Online Manual for instructions on switching authentication methods.

# Windows Help

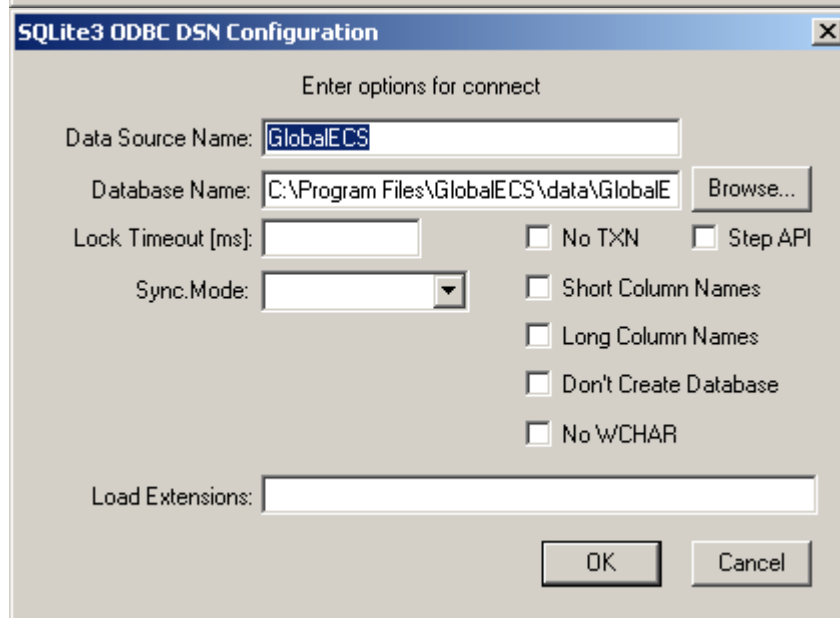
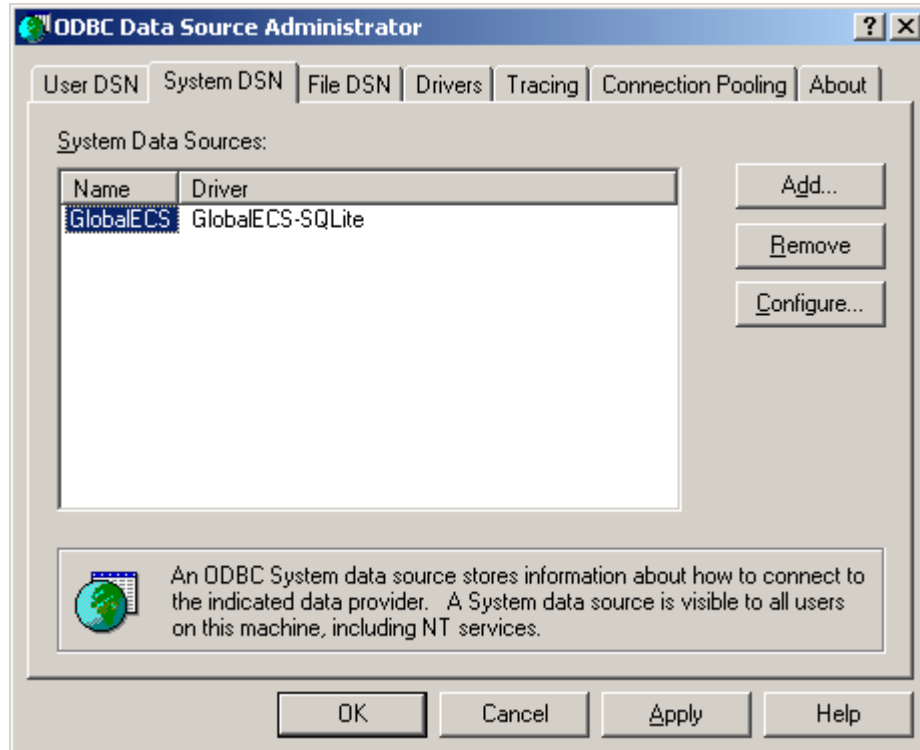
GECS uses old style (.HLP) help files for the online tutorial and context sensitive help. By default, newer versions of Windows (Vista and Windows 7) are not capable of displaying HLP style help files. You must download and install the "winhlp32.exe" help display program from Microsoft before the GECS online tutorial and context sensitive help will work. This program can be downloaded from the Microsoft web site for no charge by clicking [Winhlp32.exe for Vista](#) or [Winhlp32.exe for Windows 7](#). If you have problems with these links, find a site from which to download this program by searching the web for "winhlp32.exe".

# Pre Installation Steps

Before proceeding with the installation of this software you MUST have completed the following steps, depending on whether you are installing an evaluation using the SQLite database or installing a SQL Server or Oracle based full system.

## EVALUATION INSTALLATION

If you are installing an Evaluation which uses the SQLite database server, no special pre installation steps are required. SQLite is automatically installed during the Evaluation installation. A DSN named 'GlobalECS' is automatically created that uses the supplied GlobalECS-SQLite ODBC driver.

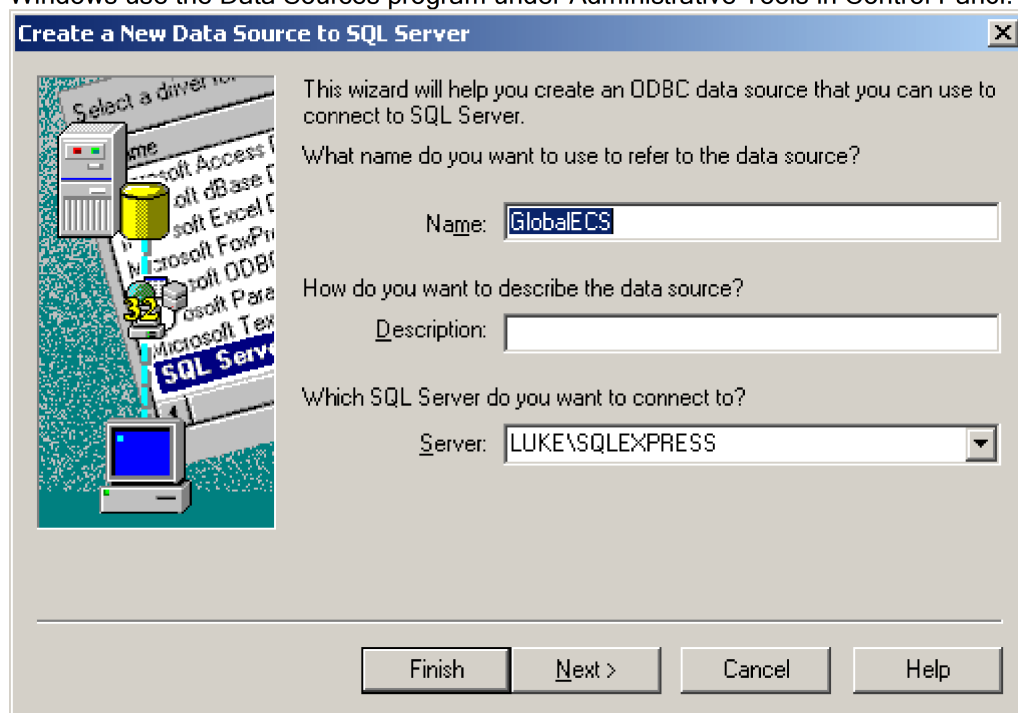


## NEW INSTALLATION WITH MICROSOFT SQL SERVER

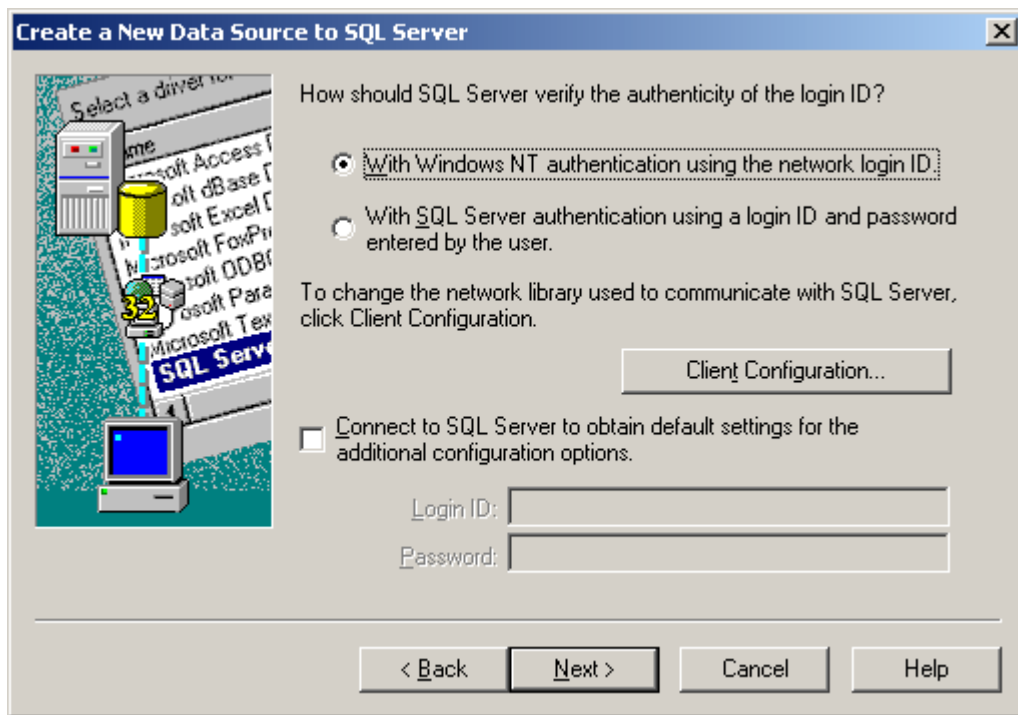
If you are installing a New Installation and intend to use the Microsoft SQL Server database

server, you must complete the following pre-installation steps:

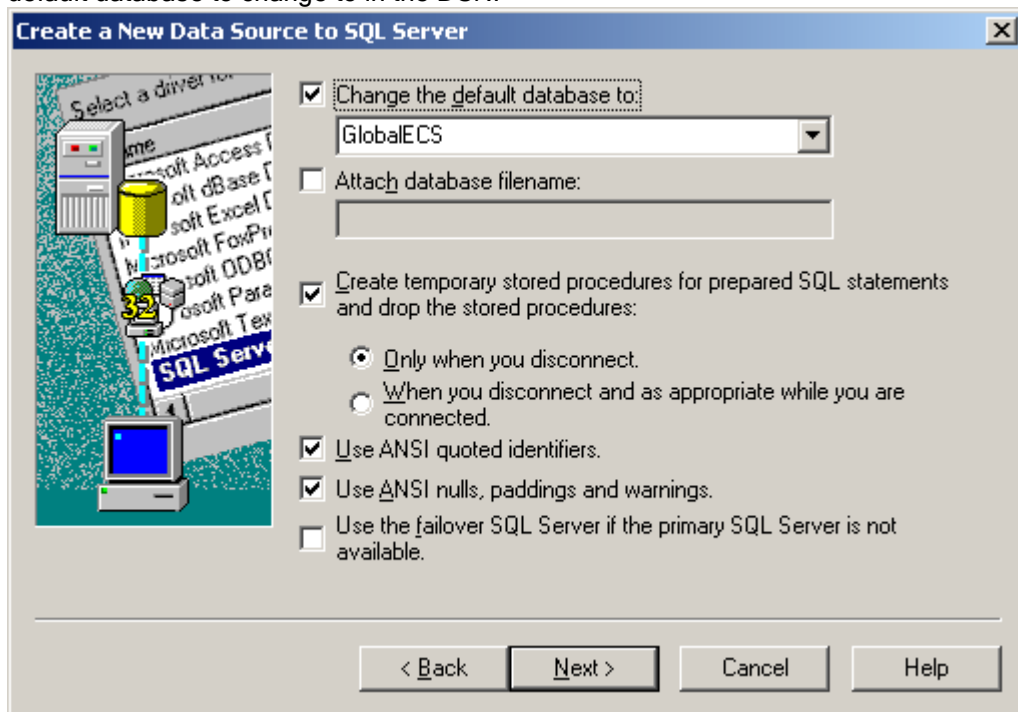
- a) The SQL Server database server (SQL Server 2000 or SQL Server 2005) must be installed and running and you must know its name or address (i.e. LUKE\SQLEXPRESS).
- b) You must create the SQL Server database where the data will be stored and you must know its name (i.e. GlobalECS).
- c) You must create the SQL Server users you intend to use and know their names and passwords. The user used for installation must have rights to create tables in the specified database. Other users must have rights to view and edit the data in the tables in the specified database.
- d) The SQL Server ODBC driver must be installed on every computer that will run the GECS System Manager, Controller, Web Manager, Admin, Dashboard or utility programs.
- e) An ODBC data source (i.e. GlobalECS) must be created on every computer that will run the GECS System Manager, Controller, Web Manager, Admin, Dashboard or utility programs using the driver, database and server name or address from above. You must create a System data source on any computer that will run the GECS System Manager, Controller or Web Manager programs as services on the system account. If the computer is running a 64 bit version of Windows (Windows XP x64, Server 2003 x64, Vista x64 or Server 2008 x64) you must create the DSN using C:\WINDOWS\SYSWOW64\ODBCAD32.EXE. For 32 bit versions of Windows use the Data Sources program under Administrative Tools in Control Panel.



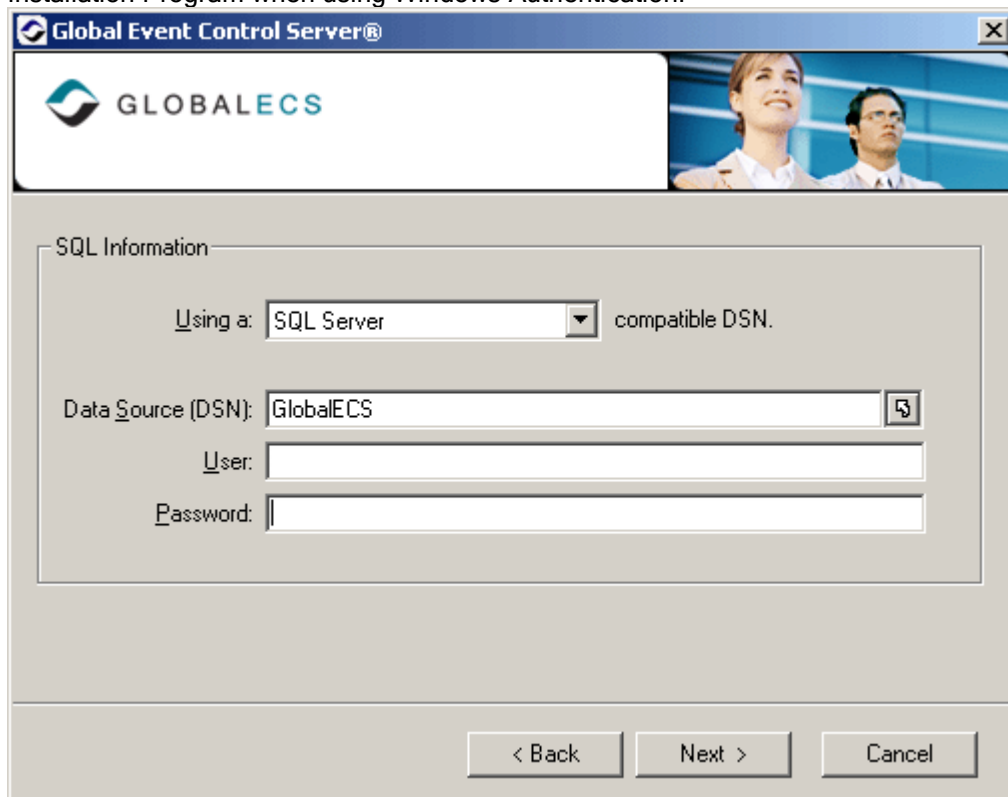
You can use either Windows authentication or SQL Server authentication when creating the DSN.



You must enter the name of the database where the data will be stored (i.e. GlobalECS) as the default database to change to in the DSN.



f) When you begin to install Global ECS, you will need to indicate that you are using a SQL Server compatible DSN and enter the name of the DSN (i.e. GlobalECS) into the Global ECS Installation Program. You do not need to enter a username and password into the Global ECS Installation Program when using Windows Authentication.

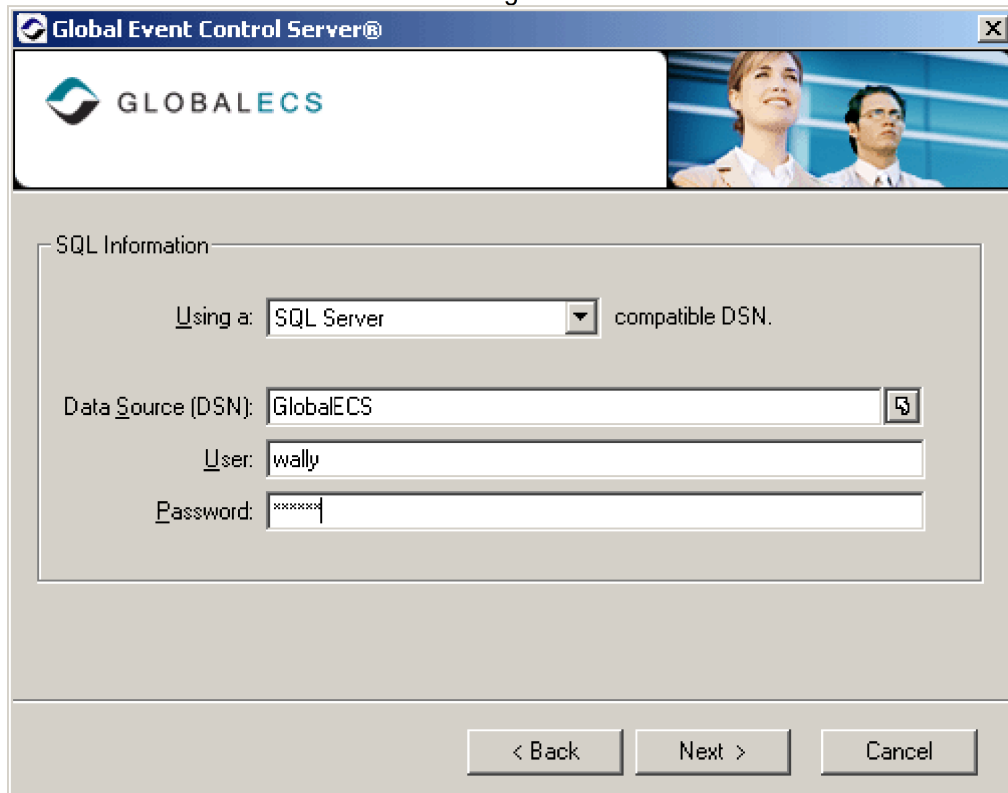


The screenshot shows the 'Global Event Control Server' installation window. The title bar reads 'Global Event Control Server®'. The window features the 'GLOBALECS' logo on the left and a photograph of two people on the right. The main area is titled 'SQL Information' and contains the following fields:

- 'Using a:' dropdown menu set to 'SQL Server', followed by the text 'compatible DSN.'
- 'Data Source (DSN):' text box containing 'GlobalECS' and a selection icon.
- 'User:' empty text box.
- 'Password:' empty text box.

At the bottom of the window are three buttons: '< Back', 'Next >', and 'Cancel'.

For SQL Server Authentication, you will need to enter the username and password created above into the Global ECS Installation Program.



This screenshot is identical to the one above, but with the following changes in the 'SQL Information' section:

- 'User:' text box contains the text 'wally'.
- 'Password:' text box contains several asterisks '\*\*\*\*\*'.

The rest of the interface, including the title bar, logo, photograph, and buttons, remains the same.

## NEW INSTALLATION WITH ORACLE SERVER

If you are installing a New Installation and intend to use the Oracle database server, you must complete the following pre-installation steps:

- a) The Oracle database server (version 8, 9 or 10) must be installed and running and you must know its name or address.
- b) You must know the name of the Oracle schema where the data will be stored and create the user/schema if it doesn't exist.
- c) You must create the Oracle users you intend to use and know their names and passwords. The user used for installation must have rights to create tables in the specified schema. Other users must have rights to view and edit the data in the tables in the specified schema.
- d) The Oracle ODBC driver must be installed on every computer that will run the GECS System Manager, Controller, Web Manager, Admin, Dashboard or utility programs.
- e) An ODBC data source (i.e. GlobalECS) must be created on every computer that will run the GECS System Manager, Controller, Web Manager, Admin, Dashboard or utility programs using the driver, user and server name or address from above. You must create a System data source on any computer that will run the GECS System Manager, Controller or Web Manager programs as services on the system account. You must enter the address or name of the Oracle server and the user ID to use. If the computer is running a 64 bit version of Windows (Windows XP x64, Server 2003 x64, Vista x64 or Server 2008 x64) you must create the DSN using C:\WINDOWS\SYSWOW64\ODBCAD32.EXE. For 32 bit versions of Windows use the Data Sources program under Administrative Tools in Control Panel.

Oracle ODBC Driver Configuration

Data Source Name: GlobalECS

Description:

TNS Service Name: ORCL

User ID: DAVE

Buttons: OK, Cancel, Help, Test Connection

Application | Oracle | Workarounds | SQLServer Migration

Enable Result Sets  Enable Query Timeout  Read-Only Connection


Enable Closing Cursors  Enable Thread Safety

Batch Autocommit Mode: Commit only if all statements succeed

Numeric Settings: Use Oracle NLS settings

- f) When you begin to install Global ECS, you will need to indicate that you are using an Oracle compatible DSN and enter the name of the DSN (i.e. GlobalECS) into the Global ECS Installation Program. You need to enter a username and password into the Global ECS Installation Program. You also need to enter the name of the Oracle Schema where the data should be stored.

Global Event Control Server®

 GLOBALECS 4.10

SQL Information

Using a:  compatible DSN.

Data Source (DSN):

User:

Password:

Schema:

< Back    Next >    Cancel